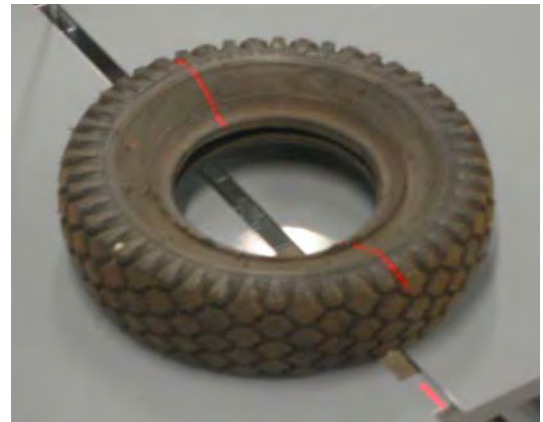
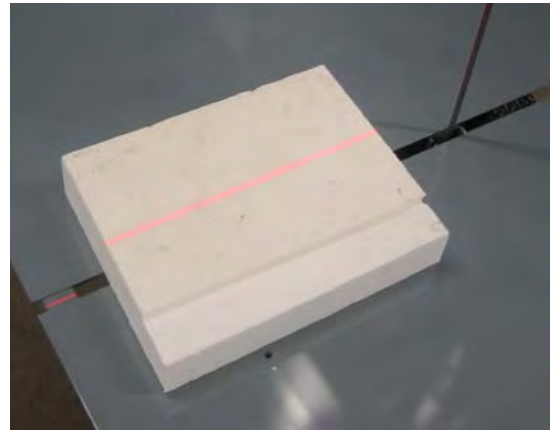
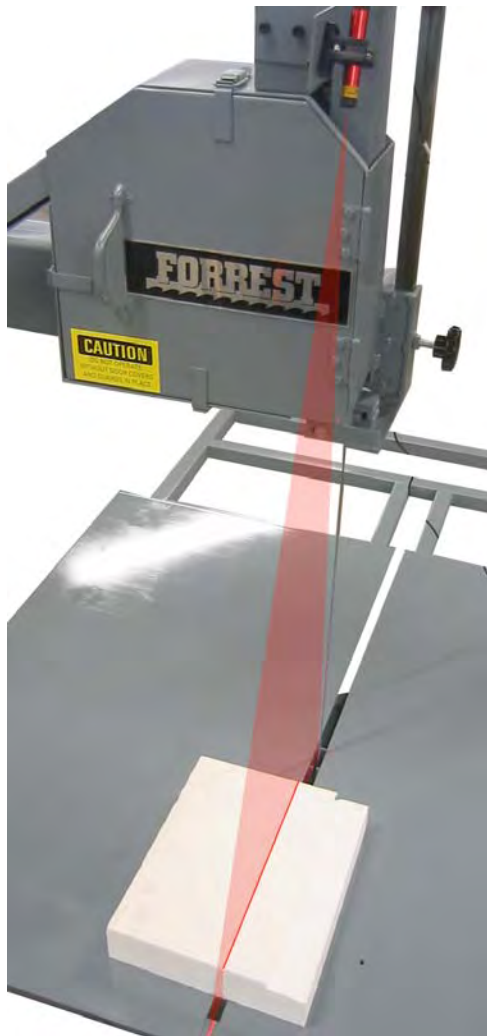


Laser Guideline Light Vertical Bandsaw Accessory

FORREST



The laser guideline light is an accessory for Forrester vertical bandsaws. It improves cut accuracy and productivity by casting a bright red line on the workpiece where the blade will pass through the material. The light mounts above the top wheel cabinet on an adjustable bracket. Once properly adjusted the light casts a line of bright red light on the workpiece. Just move the workpiece until the light shines on the part where you want to cut the part, slide the table forwards, and you have exactly the cut you wanted, faster and easier than measuring or eyeballing the cut. The laser line doubles as a safety feature, warning the operator if his hand is in the cut path.

Features:

- 1mW diode laser projects a line which is visible on matte black surfaces up to 12 feet away under normal indoor lighting. Line is 1/32" wide.
- Available installed on new equipment or as a retrofit kit.
- Operates on single phase current.
- Spherical mounting bracket makes initial adjustment simple.

Forrest Mfg. Co.
2825 West 11th St. • Houston, Texas 77008
Tel: 713-864-2545 • Fax: 713-864-3698
Email: info@forrestmfg.com
www.Forrestmfg.com